



Nintendo Magazine

Feature
Pages

2023
summer

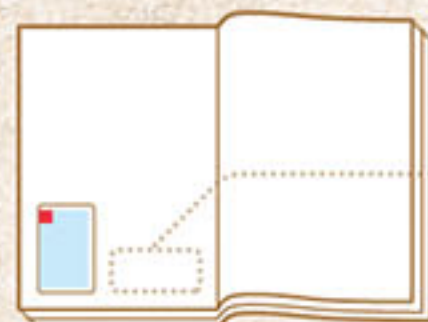
Dive into Summer

Special Feature

The Legend of Zelda: Tears of the Kingdom



The supported play modes and number of players vary for each title.



Please check the compatibility chart shown next to the package design and title name.

Example ▼ TV Mode ▼ Tabletop Mode ▼ Handheld Mode

Play mode			
No. of players	1-4	1-4	1

Some software supporting multiplayer requires one compatible controller per player.



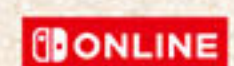
Nintendo Switch Lite can only play games that support handheld mode.



Compatible



Not compatible



◀ Software with this logo includes modes and features that you can enjoy with a paid membership to Nintendo Switch Online.

*Information and prices in this booklet are current as of July 2023.

*Screenshots shown in this booklet include those taken during development.

The Nintendo Switch logo, Nintendo Switch, Joy-Con, and amiibo are trademarks of Nintendo.

Summertime Adventure!

Dive into the vast wilderness!

When you think of summer, what kind of places come to mind? The mountains? The ocean? Maybe the skies? Let's look at these three settings and some fun outdoor activities to experience in Hyrule!

Sky

Skydiving

With the wide open and unending sky at your fingertips, you can skydive to your heart's content! While you're plummeting toward the surface, look out for spots you want to check out.

Diving into sky island mysteries

The sky is filled with mysterious floating islands. Some are spherical, while others are shaped like stars. If you see one that piques your interest, make sure to explore! The Wing Zonai device is just the thing for traveling between islands.



Discovering an unknown civilization

The sky islands contain the ruined remnants of a civilization believed to have once existed. Why not investigate these Hylian mysteries?

Mountains

Trekking

The mountains of Hyrule are teeming with life, so why not try out some rock climbing while you're there? You can hunt the native wild creatures or collect the fruits and veggies unique to these arid climes. And nothing beats the view you get from atop a mountain peak!

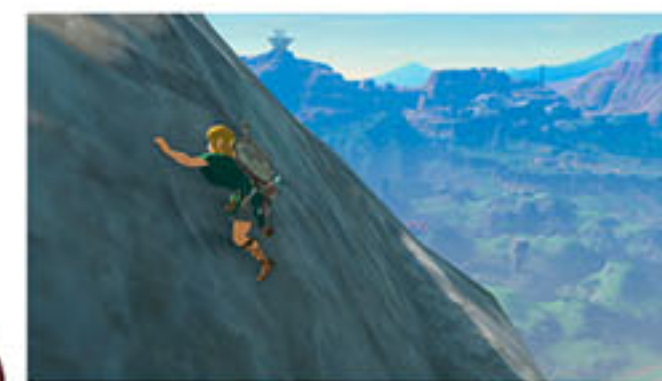


Must-Do



Campsite Cooking

Enjoy a campsite meal made from mountain flora and fauna you've just caught. Don't forget to bring along the Portable Pot that you can take out wherever you like.



Enjoy the view

It's just you and the mountain as you head for the summit. Make sure to choose a route that lets you take occasional breaks. The views of Hyrule while climbing are stunning, but be careful not to get too distracted and fall.

\ Cave exploration! /

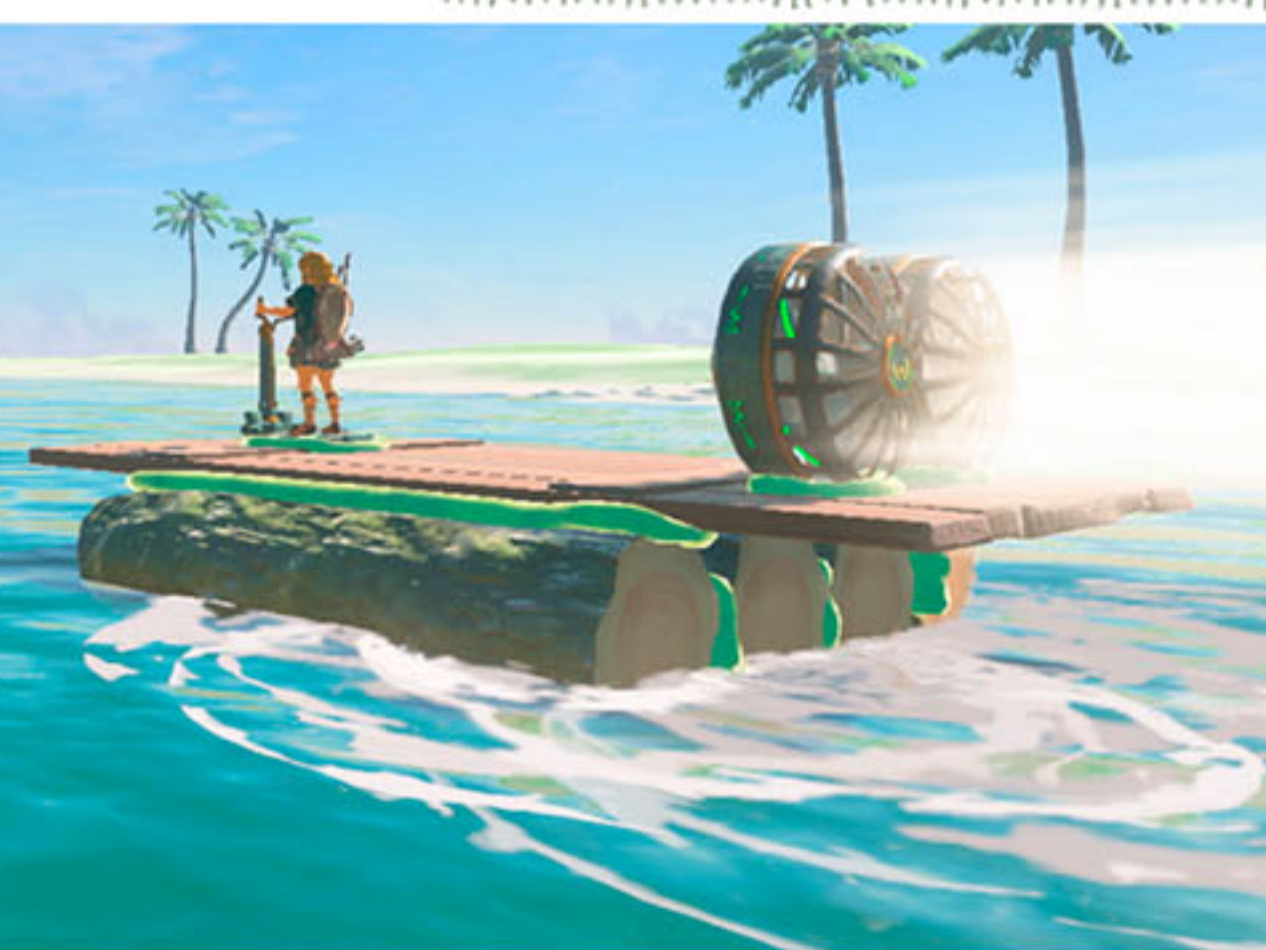


Discover the beckoning entrance to a mountainside cave. Just how deep does it go? Feel the thrill of the unknown.

Sea

Boat travel

Stroll the shoreline to smell the briny breeze, hear the gulls and lapping waves, and catch a glimpse of distant islands. Build a boat of your own design and set sail on a grand ocean adventure!

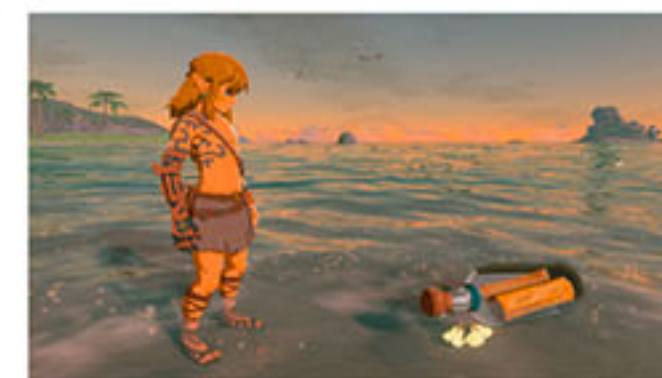


Horseback on the beach



Sublime Sunsets

Take in the beauty of the sun setting over the ocean. Stake out the best view from your boat, then wait for the moment the sun dips below the horizon.



Flotsam and jetsam

You might just find something in the sand while taking a walk along the shore. Is this a letter someone wrote?



The bounty of the sea

Cuisine made from fresh-caught seafood is a must try! How about combining crab, Hylian rice, some butter, and salt to make a delicious Crab Risotto?

Independent Summer Research

with The Legend of Zelda

The Legend of Zelda: Tears of the Kingdom is a perfect fit for conducting your own research during the summer! With Link's Ultrahand and Fuse abilities, you can stick things together and pull them apart, letting you build whatever you like. What would you get if you combined this and that? It's time to experiment!



1 Making weird weapons with the Fuse ability!

The Fuse ability lets you stick things to your weapon, so use your imagination to create weapons with all sorts of properties.



Tree Branch



Skysroom



Bouncy Branch



The bouncy mushroom sends enemies flying when you whack them with this!



Soldier's Broadsword



Lizalfos Tail



Lizal Tail Whip



The tail extends like a whip for long-range attacks!



Old wooden shield



Rocket



Rocket Shield



Gain altitude with a burst of rocket power! Shields aren't only for defense.



There are all sorts of other combinations, so try out a variety of fusions!



2 Making vehicles with Ultrahand!

With the Ultrahand ability you can pick up objects and stick them together. Try building your own unique vehicles.

Making a car

Go for a drive across the vast lands of Hyrule!



What you'll need

3 Logs

4 Big Wheels

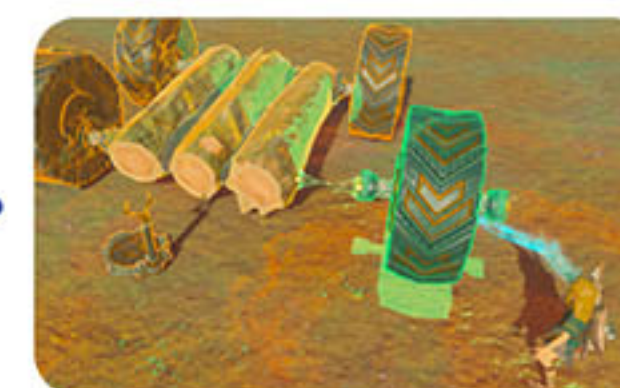
1 Steering Stick



1 First, cut down some trees to make logs.



2 Stick the logs together to create the body of the car.



3 Attach the wheels and Steering Stick, and it's done!



3 Use wheels to build a weapon!

In Research 2, we used Big Wheels to build a car. They can also be used for things other than vehicles! Here, we've built a tool that uses their rotating properties for combat.

Building a flame-throwing machine

Let's build a flame-throwing machine that will attack enemies automatically!



What you'll need

2 Big Wheels

4 Flame Emitters



1 Stack the two wheels on top of each other and attach them.



2 Attach the fire-spitting Flame Emitters to the sides of the wheels and...



3 Your flame-throwing machine is complete! Place it near enemies and activate it!





\ Are you a Legend of Zelda newbie? No worries! /

Beginner's Handbook

All sorts of discoveries and challenges await you in the wide world of Hyrule. Here we'll cover a few areas that can trip people up early in their adventure. We'll also go over some useful information.

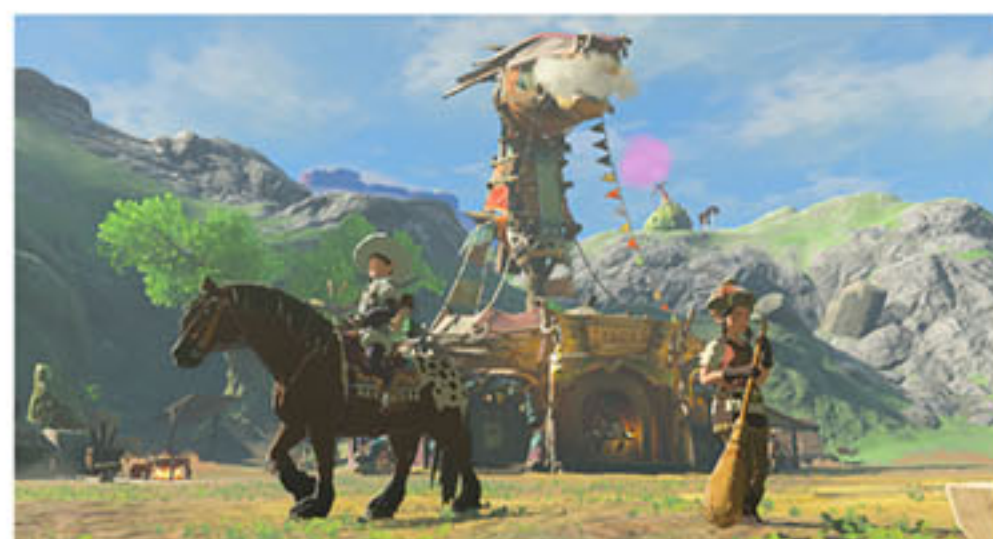


What's the tip to making progress?

Talk to everyone and gather information!



Speak to the Constructs that inhabit Great Sky Island, and they'll give you information essential to your adventure.



If you talk with the inhabitants of villages and stables, you'll gain some valuable tips and new objectives for your adventure. Speak with everyone you can!



You might even be rewarded if you offer to help people who are in trouble.



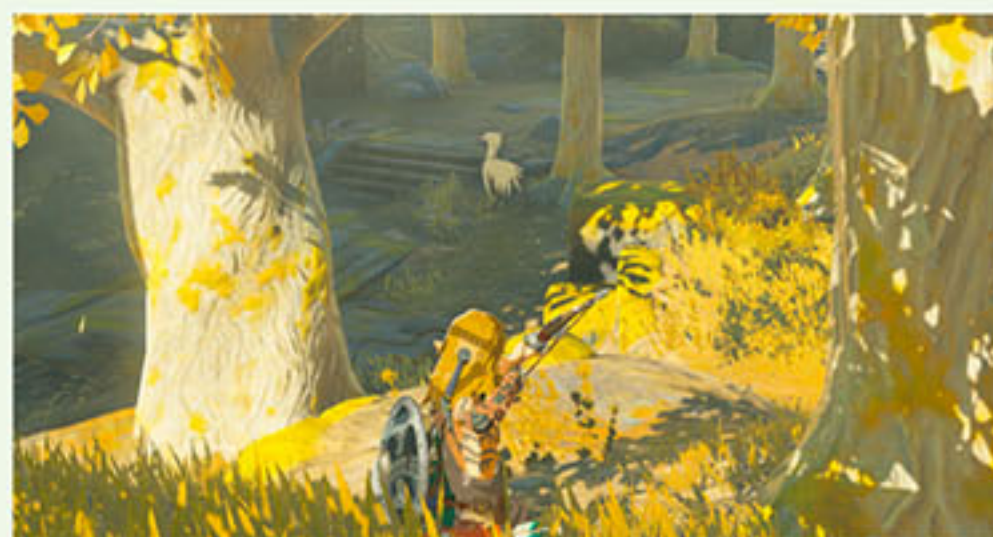
You can also learn valuable information from people reading newspapers.



Should I bother picking up materials?

Collecting materials will save you in a pinch.

Collecting materials is crucial to prepare for the challenges you'll encounter on your journey. You'll find these materials in a variety of places; at the base of a tree or in its branches, by catching creatures, or by hunting animals. It's a particularly good idea to collect a lot of edible items like apples or meat that can restore your hearts.



Apples are readily available from early on in your adventure, so pick up any you see.

Acquire meat from animals that roam the plains or dwell in forests. Cook food before eating it to make it extra tasty!



If you find a larger tree, try climbing it and you might find some eggs in a bird nest.

Items like Fire Fruit and Bomb Flowers aren't just useful in battle. You can also use them to create a fire or break through walls, respectively. Even if you don't know how you'll use certain materials, pick them up anyway! They're bound to come in handy someday.



Check out the "Adventure Tips" section of the official website for some additional useful information not covered here. If you find yourself stuck on your journey, be sure to give it a look.

See here for details ▶



How do I keep from losing hearts while in the snow?

Cooking is a good way to protect against the cold.



In the frigid cold of the mountains, even just standing in the cold will deplete your health. To protect against this, try eating foods that have the words "spicy" or "warm" in them, and you'll be able to withstand even a bitter chill. Cooked foods won't only restore your hearts, but depending on the ingredients used, they can also grant you a variety of different effects.

Example Recipes



Spicy Sautéed Peppers

Required Ingredients:
Spicy Peppers

Effect:
Cold resistance + heart recovery

Spicy Pepper Steak

Required Ingredients:
Spicy Peppers, Raw Meat

Effect:
Cold resistance + heart recovery



I wish I could make my weapons harder to break...

Improve durability with Fuse.

If you find your weapons breaking right away, try fusing a rock or boulder to them with Fuse. Not only will the weapon's attack power go up, but it also won't break as easily.



You can also improve a weapon's durability by fusing materials like horns that you pick up after defeating enemies.



Who knows what effects you'll get if you fuse materials to your arrows or shield!

If you still find yourself having trouble...

There are hints hidden in the game itself.

If you find yourself stuck when solving a puzzle, take a moment to observe your surroundings. You're sure to find a hint somewhere nearby. It's important to have a mindset of "If that didn't work, how about this?" and to try different things. You may also find that using items or abilities you've just acquired can often be the key to making progress.

PIKMIN[™]4 ピクミン

Field Report

If there is a cry for help, the Rescue Corps' mission is to come to the aid – even if it means going on an uncharted planet. Join us as we follow the daily routine of their newest recruit, a rookie Rescue Officer, to learn how castaways are rescued.

Pikmin

Oatchi

Pikmin 4
Available now

Physical	MSRP	6,578 yen (tax included)
Digital	MSRP	6,500 yen (tax included)

● Genre: Dandori Action ● Publisher: Nintendo

Play mode	TV	Handheld	Switch
No. of players	1-2	1-2	1

© Nintendo

CERO A

What Are They?

Pikmin Traits

Are they plant or animal?
That's still a mystery, but I have noted these traits.



report

1 When plucked, they follow



report

2 They get things done



report

3 Whistle to call them



report

4 A Space Dog!



A day in the life of a rookie Rescue Corps Officer

A DAY IN THE LIFE

If there is a cry for help, the Rescue Corps' mission is to come to the aid – even if it means going on an uncharted planet. Join us as we follow the daily routine of their newest recruit, a rookie Rescue Officer, to learn how castaways are rescued.



EXPLORE

Pave the way together with Pikmin

First, explore and investigate the area where the S.O.S. Signal originated, together with the Pikmin and Oatchi. By freezing the water's surface with Ice Pikmin, it seems like other Pikmin that can't swim can also cross the river safely.

You can walk on the ice!



DEPART

Prepare for the day

On an uncharted planet, anything could happen. The rookie starts their day by training the Rescue Pups and prepping the gear and items they'll need in case of an emergency.

TIP

These Bomb Rocks can deal lots of damage to creatures!



SEARCH

Descending into a suspicious cave

As the exploration continued, they have discovered what appears to be the entrance of an underground cave. Oatchi's caught a whiff of a castaway in need of rescue somewhere deep within!

TIP

When entering a cave, you can choose which Pikmin to take with you.



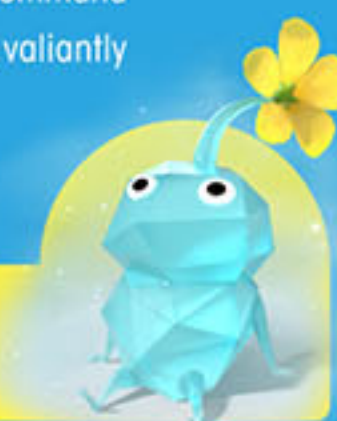
BATTLE

An encounter with a huge creature!

A fearsome foe was found lurking inside the cave! However, under the rookie's command the Pikmin and Oatchi fought back valiantly against this threat.

TIP

Ice Pikmin can also freeze creatures.



RESCUE

Castaway found and rescued successfully!

With the creature defeated, the team can finally reach the castaway they were looking for. Time to escort them back to safety and leave the cave. Another mission accomplished thanks to the courageous efforts of the Pikmin, Oatchi, and our rookie, of course.



RETURN

Return before nightfall!

The mission isn't over until everyone returns safely to the Rescue Command Post. They must return before sundown when the planet's wildlife comes out to feast on Pikmin. But the job's not over – as long as there are castaways in danger, the Rescue Corps will be back tomorrow to continue their mission!



Night Expeditions

The Rescue Corps must sometimes work dangerous night shifts too! With the help of the Glow Pikmin that thrive in the dark, they must drive away frenzied creatures and protect the Lumiknoll until sunrise.



This summer

Play through the Pikmin Series!

Pick up right away!

A demo for Pikmin 4 is now available!

Help the castaways on an uncharted planet!? The great adventure of the rookie Rescue Corps and Oatchi. This demo allows you to fully enjoy the early stages of the game. Why don't you try this one out first?



Download here!

*Save data from the demo can be carried over to the full game.



Play and receive!

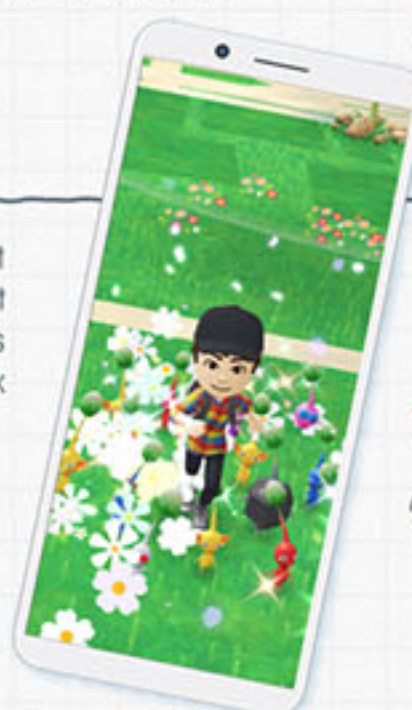
Receive exclusive Mii costumes for Pikmin Bloom by playing Pikmin 4!

Either play the Pikmin 4 game now or complete the Pikmin 4 demo version, and you will receive a Pikmin 4 Oatchi-Rider costume that you can wear in Pikmin Bloom!

*Please see the official Pikmin Bloom website for instructions on how to receive this item.

What's Pikmin Bloom?

Pikmin Bloom is a smartphone application that makes your "walking" more enjoyable. No difficult operations are required. From now on, with this app, even a short stroll or daily commute to work can be a fun adventure with Pikmin.



Pikmin 4 Spaceship Decor
Pikmin will also pop up!



*A limited-time event
from July 21 to August 13, 2023.
*This event has already ended.

Pikmin Bloom Copyright © 2021 Niantic, Inc. / Pikmin and Mii Characters / Artwork / Music Copyright © 2021 Nintendo All Rights Reserved.

Play it to the fullest!

Pikmin series on Nintendo Switch



Pikmin 1

The origin of the series. Captain Olimar, stranded on an uncharted planet, encounters Pikmin and sets out on his quest to escape.



Pikmin 2

Olimar, who has safely returned from the uncharted planet, must go back once again in search of Treasures to pay off the debt of his company.



Pikmin 3 Deluxe

To resolve the food crisis on planet Koppai, three new experts head to an uncharted planet. What awaits them there is...?

*Pikmin 1+2, which bundles both Pikmin 1 and Pikmin 2, is also available.

© Nintendo

If you want to learn more about Pikmin...

Pikmin Garden, a portal site where you can learn more about the Pikmin franchise, is now open!

A portal site, Pikmin Garden, is now launched with lots of information on the Pikmin franchise. Take a peek into the world of the mysterious creature Pikmin!

366 comics available!



Manga: Kino Takahashi

NINTENDO SWITCH™ Sports

Nintendo Switch スポーツ

Tackling the Special Lanes in Bowling!

In Nintendo Switch Sports, you can enjoy Standard lanes, which are the same as normal bowling, as well as bowling with an added twist – multiple obstacles!



Nintendo Switch Sports

Available now

Physical with the leg strap	MSRP
5,478 yen (tax included)	
Digital	MSRP
4,300 yen (tax included)	

● Genre: Sports ● Publisher: Nintendo

Play mode	TV	Handheld	Switch Online
No. of players	1-4	1	

● Online communication: 1-16 players (varies by sport)

* Each player must have a Joy-Con controller to play (a pair of Joy-Con controllers are required for Soccer).

** Number of players for Badminton, Soccer, and Chambara is 1-2 players.



Nintendo Switch Nintendo Switch Sports bundle

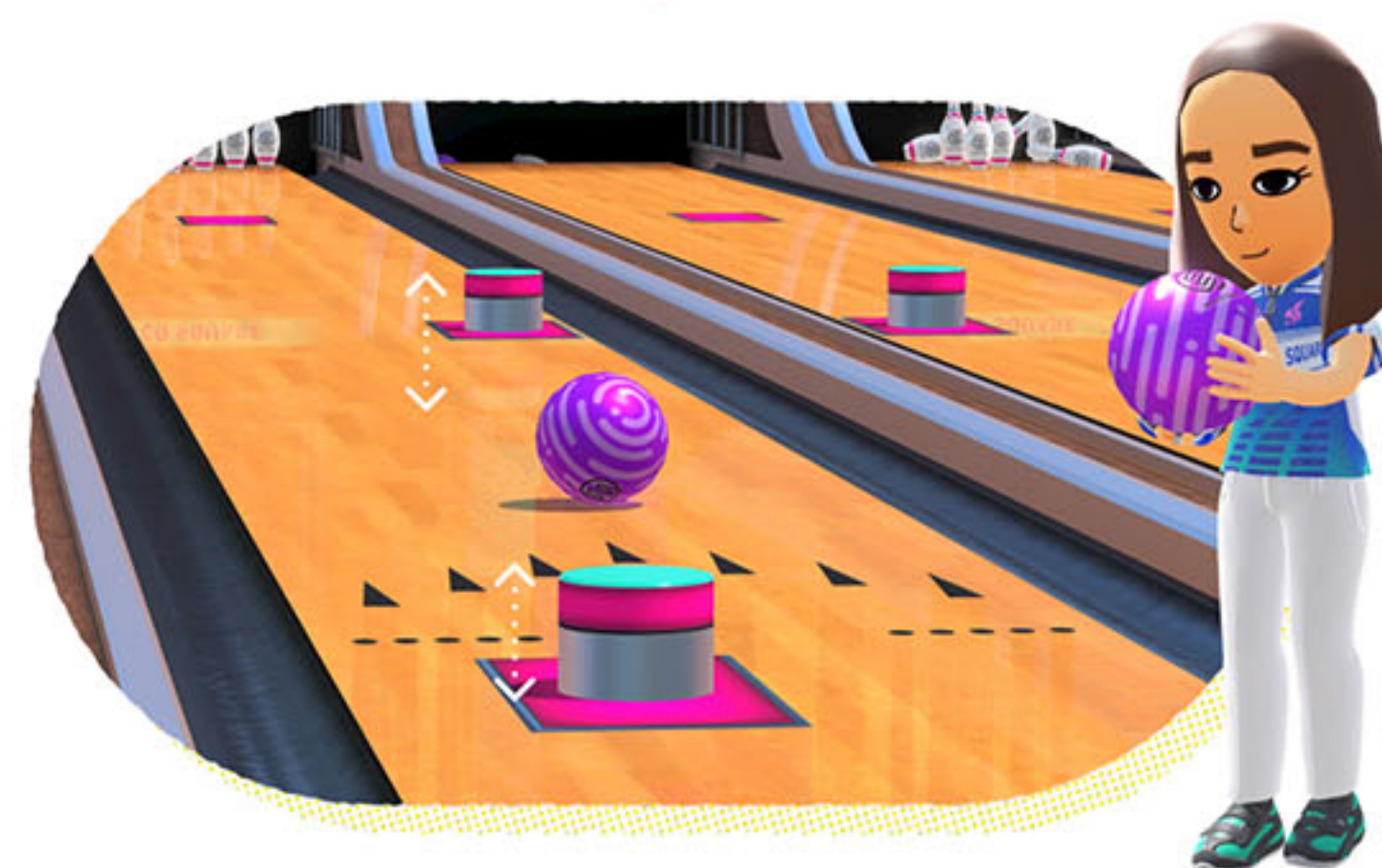
Available now

MSRP 37,980 yen (tax included)

Leg strap

Available now MSRP 1,100 yen (tax included)

The lane Aragaki-san tackled in the TV commercial



Special Lane
1

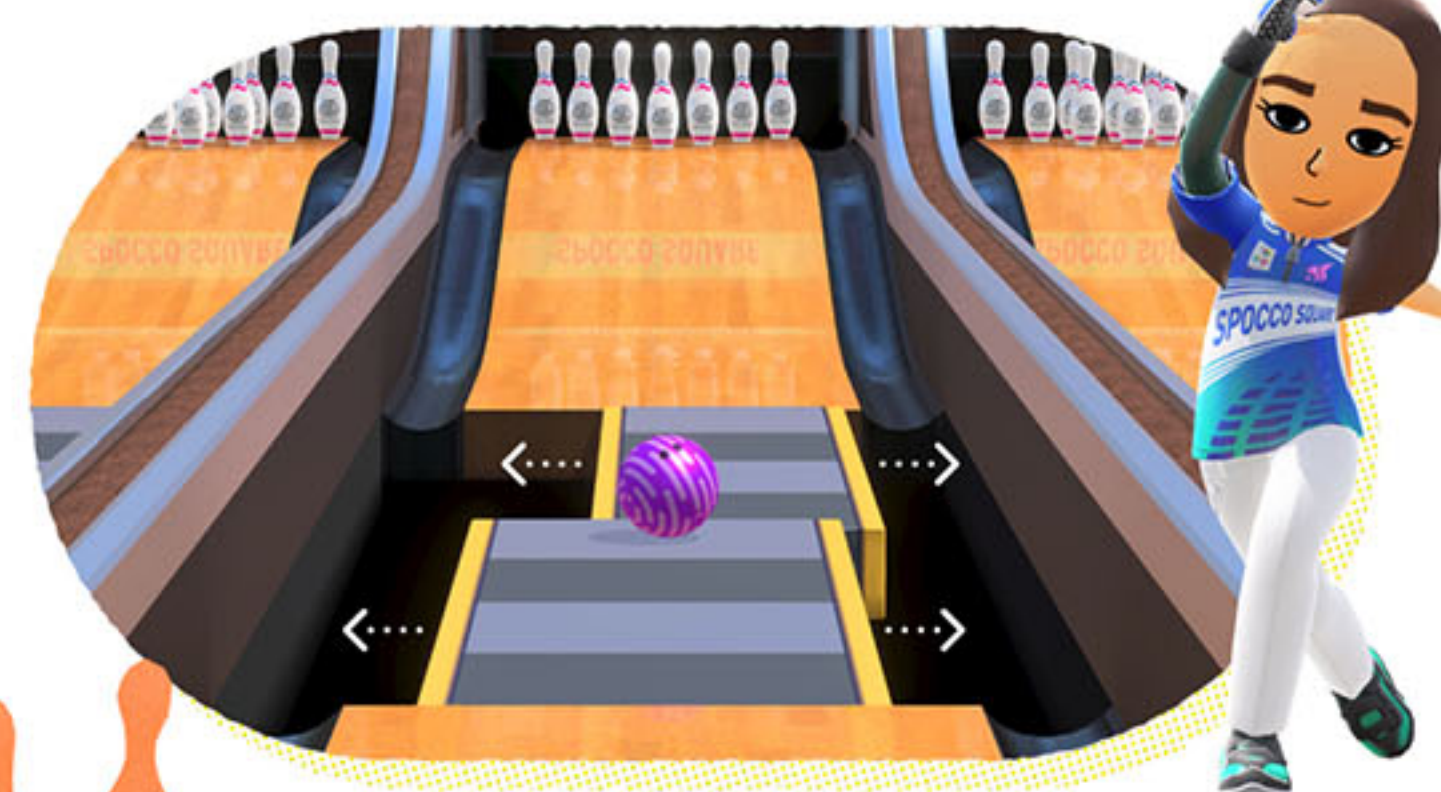
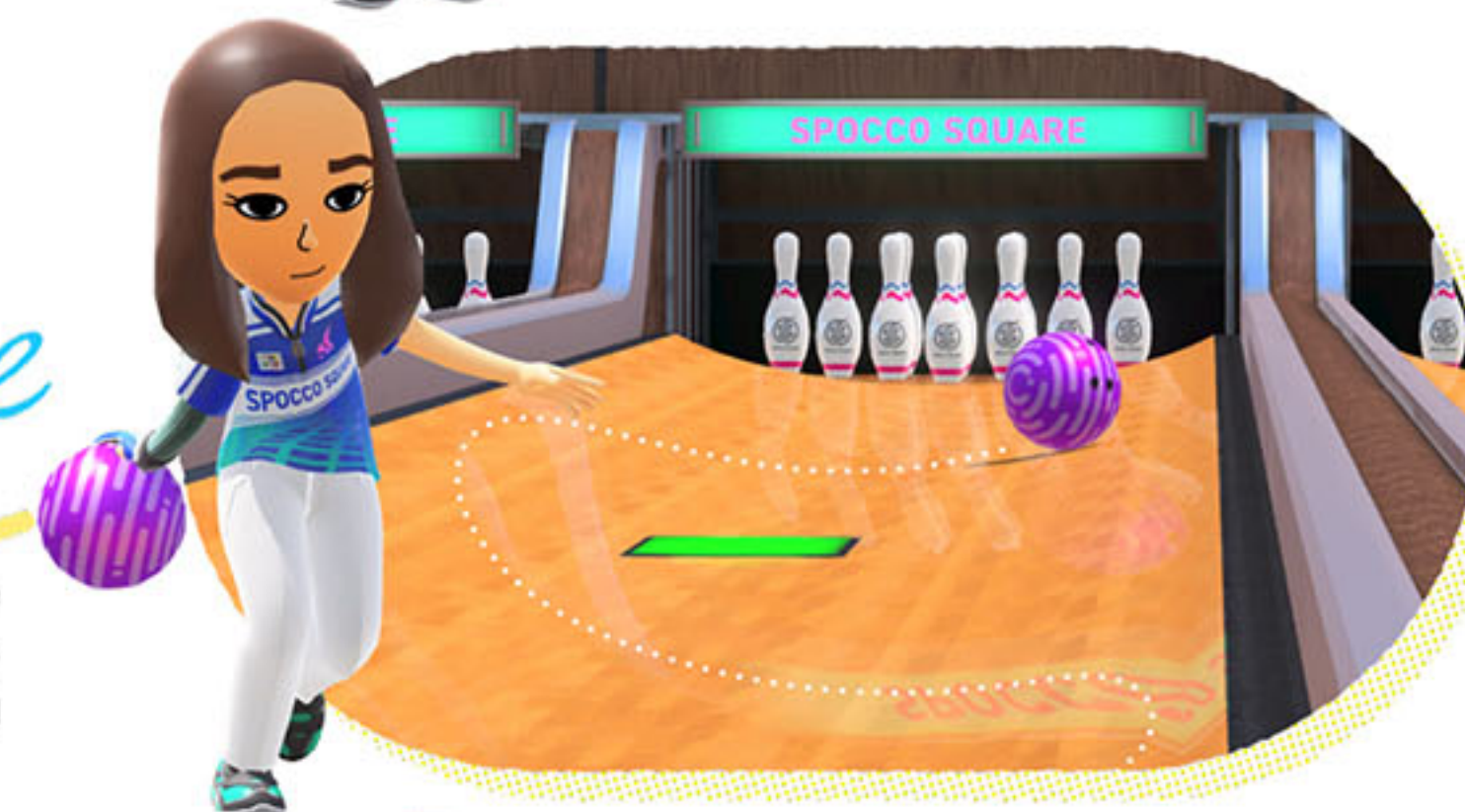
Up-and-down pillars

Pillars come up and sink back down. The changing color of the pillars will be your guide! Estimate when they will sink back down to decide when to throw the ball.

Special Lane
2

Winding half-pipe

A lane shaped like a half-pipe – the edges curve upward, while the center dips low. The ball's trajectory will snake through the lane, so predicting its movement is key!



Special Lane
3

To-and-fro bridge

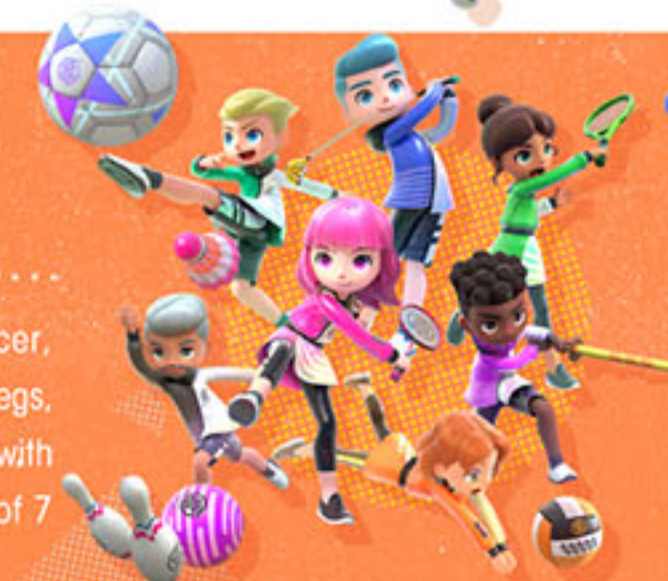
The bridge area of the lane moves from side to side. If the ball falls off the bridge, it won't reach the pins. Planning the course of the ball is critical.

*Many other Special Lanes included!

A total of 7 sports

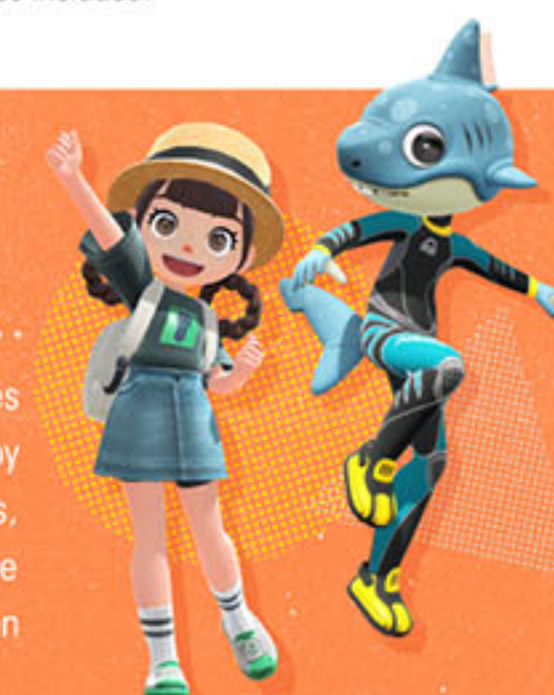
Other than Bowling, there is Soccer, where you use both your arms and legs, and Volleyball, where coordination with your teammate is crucial. A total of 7 sports are included.

*Basketball added in July 2024, and there are now a total of 8 Sports.



Stylize as you wish!

You can enjoy different fashion styles from the different items you collect by playing online, including hairstyles, hair colors, and accessories. The possibilities are endless! You can even dress up as an animal.



STREET SNAP COLLECTION



Check out the fresh summer fashion of Inklings and Octolings engaged in hot Turf War battles every day!



Barazushi



The brand specializes in items for cold climates, but you must check summer outfits too. For the style with a T-shirt that tends to match with others, wrap a stole to set yourself apart from the rest of the pack.



An energetic yet sophisticated summer look coordinated with Barazushi. With the monotone-based item selection, the brand's orange color stands out.

Eyewear: Moto Shades (Barazushi) 10,200G/ T-shirt: Barazushi Wrap (Barazushi) 7,200G/ Sneakers: White Lo-Vert Hi-Tops (Zink) 10,200G



The silver prints, buckles, and other metallic touches here and there adds an edgy look to the Splatville-style punk fashion. Bring damaged jeans for your bottoms to add an extra punk edge.

Mask: Skull Bandana (Forge) 7,800G/ T-shirt: Anaaki Bracelet Tee (Anaaki) 8,000G/Sandals: Annaki Strappy Sandals (Anaaki) 890G



A classic guayabera shirt with seahorse embroidery has excellent breathability. Add on a boater and leather sandals, and you've got an elegant resort look.

Hat: Straw Boater (Skalop) 550G/ Tops: Seahorse Shoreliner (Krok-On) 3,800G/ Sandals: Cuttlefish Sandies (Rockenberg) 850G

Emberz



A brand of note among fashion-conscious Inklings. All items feature an iconic three-colored logo and a design with a rich Emberz-unique flavor.



While it's a traditional haori item, it gives off a street-style vibe with an asymmetrical print design. Bring volume to your clothing with a touch of effortless vibe around the feet.

Eyewear: Retro BluFocals (Emberz) 11,700G/ Tops: Indigo Boss Haori (Emberz) 10,500G/ Sandals: BlobMob Flip-Flops (Emberz) 400G



Bring the spotlight on a basketball jersey, and you get a classic hip-hop style. Despite the strong impact of each item, there's a sense of unity by using a limited number of colors in the styling.

Cap: Do-Rag, Cap & Glasses (Skalop)/ Tops: Umibozu Home Jersey (Takoroka) 870G/ Sneakers: Tenya OctoPurps (Tentatek) 7,980G

In Splatville •

An all-white dressing with Toni Kensa. The sneakers with a form like no other give off an edgy, chic look; the moment you wear them, Splatville turns into a runway right away!

Eyewear: Glassless Glasses (Toni Kensa) 11,000G/ Tops: Fashion Splash Shirt (Toni Kensa) 9,750G/ Sneakers: White Clam 600s (Toni Kensa) 11,260G



In Inkopolis



Mixing a multifunctional item like a ranger vest into your daily dressing. Now that's a true savvy squid. Outdoor items can be combined with similar color schemes for an urban look.
Hat: Safari Hat (Forge) 2,300G/ Tops: Black Ranger Vest (Inkline) 6,000G/ Sandals: Neon Delta Straps (Inkline) 4,800G



A skater style with a vintage ringer tee. A tough digital watch can endure even the toughest battles. Plus, they can boost morale in battle.

Helm: Wrinkle Stripe Helm (Skalop) 9,000G/ T-shirt: Lyco-P Streetstyle Tee (Skalop) 500G/ Sneakers: Blue Lo-Tops (Zekko)

Z+F

A splashy plaid shirt can only be done by Z+F's charming sense of fashion. Don't forget to check out another lineup from Z+F that offers cool designs using camo and much more!



Try on a pair of sunglasses with an outstanding presence. The vivid bottoms that match the colorful items from Z+F must be the next in fashion this summer!

Eyewear: Sea-Me-Nots (Z+F) 11,000G/ Tops: Rad Plaid Casual (Z+F) 9,760G/ Sandals: Yellow Toejamz (Z+F) 830G



* Splatoon 3: Expansion Pass is required to go to Inkopolis.

Splatoon 3
Available now

Physical | MSRP 6,578 yen (tax included)
Digital | MSRP 6,500 yen (tax included)

● Genre: Action shooter ● Publisher: Nintendo

Play mode: TV, CPU, Local
No. of players: 1, 1, 1

● Online communication: 2-8 players ● Local communication: 2-8 players

© Nintendo

Splatoon 3 Expansion Pass
Available now

Digital | MSRP 3,000 yen (tax included)

First wave: Inkopolis Available now
Second wave: Side Order Available now

Full version of the Splatoon 3 game is required to play Splatoon 3: Expansion Pass.



Tour with Smallfry!

Kanto Region Day One Sneak peek

in Makuu Messe

Splatoon Koshien 2023 finally kicks off!

The official Splatoon 3 tournament is now underway to determine the top of Turf War battles! Regional qualifiers will take place in five cities nationwide and online. The best team in Japan will be decided at the Grand Finals in December. Smallfry and the editorial team will report on day one of the Kanto region qualifiers back in April!



First in the history of Koshien event!

Hosted two divisions: Elementary School students and General participants!



A total of 640 unique teams participated in the regional tournament. For the first time in Koshien, an Elementary School student division was held, and the fresh squids out there were performing splat-tastically!



Anything could happen in Koshien.

Many great fierce battles unfold!



The look on the squid researcher's faces shows how fierce the battles are!



The spectators watching the game seriously.



Behind the stage. I can feel the tense atmosphere.

Many great upheavals on day one of the Kanto qualifier, with heated matches from beginning to end! The excitement at the venue reaches its maximum as we witness the seesaw games!



Just a mere 0.1% difference.

The very last splat can be a game-changer!



The winning team for day one Elementary School students was "RESP-ects". This team overwhelmed the other teams with individual abilities—outdazzling even the adults—and their solid fighting style of firmly keeping the front lines! The winner of the General participants was "Thieves of the Heart". The final battle between the evenly matched teams were very tense, keeping you on your toes until the very last moment. The team won the match by a narrow victory of 0.1%!



The uniform that only the winners can get!



Now accepting participants and on-site spectators. For online tournaments too!

All matches are live-streamed on the official website.



is a party where
**I'll help you in
all the horsing
around!**



Stirrup the fun!



Even if you don't have enough Joy-Con controllers, you can easily join in with your smart device. You can invite people you don't always play games with and party!

**Joy-Con or
Smart devices
as your controller!**

Host

Horace Showpony

A legendary hype-man who is great at complimenting and easily gets hyped up himself. He's an enthusiastic party host!



Stirrup the fun!



Games for both small and large groups are here for you!

**Can be played by
up to 100 people**

Statues

Agility ★★
Balance ★★
Communication ★

Walk in place when the boy isn't looking and be the fastest one to reach the goal.

Quiz Party

Common knowledge ★
Friendliness ★★
Communication ★★

Make your own customized quiz and have everyone answer it!



Wedding After-Party

After-parties are an event where you meet many people, both new and familiar. Simple games that anyone can join are recommended.



Office Mixers

A wide range of ages join in office mixers, from young newcomers to seasoned veterans. How about playing some games requiring some brainwork?



Ice Cream Parlor

Writing shorthand ★★★
Memory ★
Communication ★★★

Divide responsibility within the team and record the ice cream orders on your smart device screen.



Bingo

Good timing ★
Luck ★★
Communication ★★

A bingo game, where the number is decided by stopping the roulette with a Joy-Con controller.

Your smart device is now your bingo card!



Musical Chairs

Sense of rhythm ★★
Agility ★★
Communication ★★

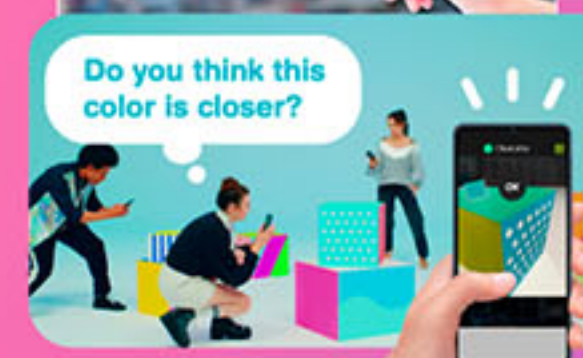
Listen to the music and sit down when it stops.



Color Shoot

A good eye for color ★★
Explorer's mind ★★
Communication ★

Capture the color closest to the example on your smart device within a time limit.



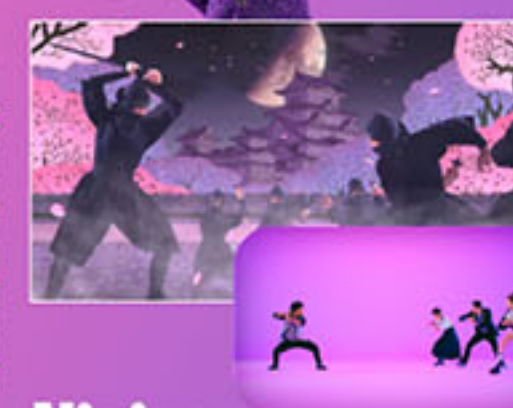
Other games



UFOs

Contact ★★
Teamwork ★★
Communication ★★

Move the Joy-Con controller or smart device up and down or side to side. Bring yourselves together to become friends with the aliens.



Ninjas

Agility ★★
Team coordination ★★
Communication ★★

Deflect throwing stars that the opposing team throws with your Joy-Con "sword."



BBQ with Friends

Games that can be played with tabletop mode are recommended to play outdoors.



Everybody 1-2-Switch!

Available now

Physical MSRP 3,278 yen (tax included)

Digital MSRP 3,200 yen (tax included)

●Genre: Party ●Publisher: Nintendo

Play mode	TV	Tabletop	Smart Device
No. of players	2-8	2-8	2-8

Smart Device mode can be played by up to 100 players (internet connection required for both the Nintendo Switch system and smart devices).

© Nintendo



Run! Swim! Fly! which is your ride?

Here are some vehicles and living things that appear in games that allow you to go to unreachable places and move faster than running.



Morgana Car

↑ Persona 5 Royal

A member of the Phantom Thieves, Morgana, transformed into a bus. It is the Phantom Thieves' reliable way of transportation, gallantly running through the world with its dependable meowtary engine.



Ultrahand

↑ The Legend of Zelda: Tears of the Kingdom

With the "Ultrahand," the ability to attach things together, you can freely create vehicles as well. The player's free creativity guides Link to an endless adventure.



Koraidon Miraidon

← Pokémon Scarlet/Violet →

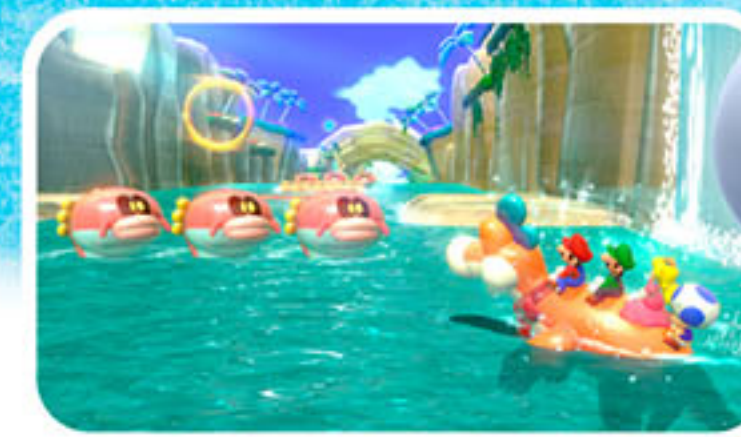
Legendary Pokémon you meet in the Paldea region. When you ride on the ride form of them, you can move through not only land but also on water, the sky, and even a vertical cliff.



Wartrain Gouon

→ Bayonetta 3

The armed combat train "T696," built for national defense, that transformed into an Infernal Demon after being possessed by a vengeful spirit. When Bayonetta controls it, she can freely shoot cannons while making it race on.



Plessie

→ Super Mario 3D World + Bowser's Fury

Plessie swims to take Mario and the group across the sea and rivers, and to cross sand dunes. He can also jump over obstacles.



Palamutes

→ Monster Hunter Rise

A Palamute can team up with the hunter to attack, let the hunter ride on its back to move, and support the hunter in various ways as a trustworthy companion.



Thigh Rider

← Ring Fit Adventure

A vehicle that converts the explosive energy produced by the inner thighs to the power to float. The fusion of inner thighs and science has allowed humanity to fly.



Seals

→ Fight Crab

These ultra cuties carry fighting crabs into battle. It's high-speed mounted battle time when crustaceans saddle up on mammals!



Reefslider

→ Splatoon 3

A shark-shaped special weapon that charges forward at high speed, then explodes to scatter ink. Squids hoping to cut water with Reefslider, but then furiously drowning in vain, have also been spotted.



Dolboard

→ Dragon Quest X Offline

It is one of the ancient "Godly mechanisms," which allows you to quickly move around the field while flying at a low altitude. If you attach a prism, you can also change its appearance.

*English language version is not available.

Whom would you cheer for? Calling all Muscle Masters!

Gathered are the beautiful physiques that everyone will be captivated.

Why not spend a hot summer with all who are well-trained?

/ Nice bulk! \

Louie

A resident of the deserted island. Talks to his muscles every day; he feels that it will somehow help him muscle up. His habit is to say, "Hoo hoo ha."

Animal Crossing: New Horizons



/ Cool!! \

King Dedede

Corrupted by the Jamba Heart, the self-proclaimed King obtains a muscular body! Maybe he lacks a little training for his lower body?



Kirby Star Allies

© 2018 HAL Laboratory, Inc. / Nintendo

/ Wow! \

Zarya

Raised in an environment devastated by war, she succeeds as an athlete but sacrifices the life she might have had to become a soldier for her country. Some say she's the world's strongest woman.



Overwatch 2

© 2023 Blizzard Entertainment, Inc.

Clap clap! /

/ Looking cut! \



Mr. Coco

Owner of Crush Station, a shoe store in Splatsville. The force of his pincers is 90 times the body weight. Rumor has it that he aimed to be a pop singer in his younger days.



Splatoon 3



Dragaux

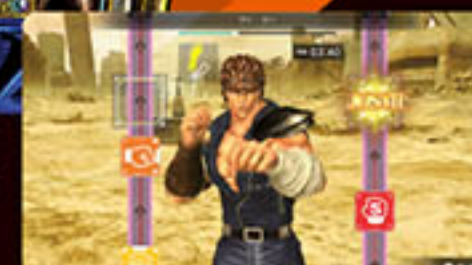
A dark dragon that will face off against the Ring Fit Trainee multiple times. He is highly conscious that he starts working out even during battles. Not to mention, his physique is always perfect.



Ring Fit Adventure

Kenshiro

The 64th successor of the Divine Fist of the North Star. Who knew that one day, he would be training us as an instructor?



Fitness Boxing: Fist of the North Star

Looking swole! /



Donkey Kong

The jungle king with unlimited power. Even in front of a formidable enemy, he never forgets his drumming. His favorite food, bananas, is his source of energy.



Donkey Kong Country: Tropical Freeze

© Nintendo

Ganondorf

Born as a male among the all-female Gerudo tribe. He has a magnificent physique that lives up to the name of the warrior race, well-apt at combat.



The Legend of Zelda: Tears of the Kingdom

Rex

The once small boy has grown into a great fighter, easily wielding large twin swords. His muscular build, which even feels stately, is a badge of honor he has fought through multiple battles.



Xenoblade Chronicles 3

© Nintendo / MONOLITH SOFT



Machop

A Pokémon that has mastered all kinds of martial arts. The posture with its four arms is quite impressive!



Pokémon Brilliant Diamond and Pokémon Shining Pearl

© 2021 Pokémon. © 1995-2021 Nintendo/Creatures Inc./GAME FREAK Inc. Developed by ILCA, Inc.

Sakura Ogami

The Ultimate Martial Artist who experienced all kinds of styles under her father, a fighter. Legend has it that she was fighting even before she could get in a stroller.



Danganronpa: Trigger Happy Havoc Anniversary Edition

© Spike Chunsoft Co., Ltd. All Rights Reserved.

// Nice proportion!! //



The Anatomy of Famicom

This year marks 40 years since Nintendo released the Family Computer system (known as the NES in North America and Europe) on July 15, 1983, in Japan. Known as the Famicom, this home video game console introduced numerous games to the gaming world. Let's take a look back at this classic game console that remains in people's memories and compare it with the Nintendo Switch system.

● Cassette Connector (Connector Cover)

Players could enjoy a variety of games by switching cassettes. Back in the day, it was common that players could only play fixed games on a single console. The cover protected the connector from dust when the cassette was not inserted in the slot.



You can see the design of the cassette.

● EJECT Lever

You can remove a cassette by sliding this to the back.

● POWER Switch

Since some games didn't have a save function back then, there perhaps might have been some players who left the power on all the time.

● Expansion Port

An expansion port for connection to peripherals sold separately.

It looks like this underneath the cover.



● RESET Button

When switching off games with a battery backup feature, you had to hold down the reset button and turn off the power.

The Controller II has a microphone.

The Controller I has a select button and a start button.

● Connection to TV

You could connect the Famicom system to a TV by attaching an accessory called an RF switch to an antenna cable.



The RF Switch was connected directly to a TV antenna outlet.

Check! Changes in the mechanism of connecting a console to a TV



Nintendo Switch system can be easily connected to a TV with an HDMI cable. You can also play it anywhere by removing it from the dock and using the screen on the console.

● Unique peripherals

Different peripherals were released to achieve various ways of controlling the game, such as a Famicom Robot, light gun, and keyboard. Some peripherals, such as the Disk System, enhanced the functionality.

Famicom Robot

A rare and unique product with only two compatible games. Its main body moved by receiving light signals from the TV screen.



Disk System

Released in 1986. You could play games by docking it with the Famicom cassette connector and loading a thin Disk Card. It had a larger capacity and better sound performance than the cassettes of the day.



● Wired Controllers

Players could play various games using mainly the cross pad and the A and B buttons.

Check! Know the differences between controllers



Nintendo Switch offers a greater variety of gameplays thanks to stick input and many buttons. Furthermore, with a wireless connection, players can enjoy games without being bound by a fixed style.

Check! Evolving with the way games are played



Several Joy-Con attachable accessories taking advantage of the functions of the Joy-Con controllers, such as a Ring-Con and Joy-Con wheel, have been released.

of characters still active today

First Famicom appearance

Many of the characters that appeared in the Famicom games are still very active in games today. We would like to introduce some of these characters, comparing their appearance in the Famicom game with that in the Nintendo Switch game.

F ...Famicom **S** ...Nintendo Switch



Mario is always bright and cheerful and instantly recognizable with his blue overalls, red cap, and trademark mustache. He and his brother Luigi have been very active in Famicom games. The arcade game, *Donkey Kong*, was the first game in which Mario appeared.

Mario Super Mario Series



Donkey Kong made his first Famicom appearance in *Donkey Kong*, the very first Famicom game. In this game, Donkey Kong was not a playable character but an enemy who kidnapped Lady.

Donkey Kong

Donkey Kong series

Samus Aran

Metroid Series



Samus Aran, who has been active as a bounty hunter, made her first appearance in *Metroid*, released in 1986 for the Disk System. The relationship between Samus, who is consistently cool and calm, and the floating lifeform Metroid started here.



Mega Man

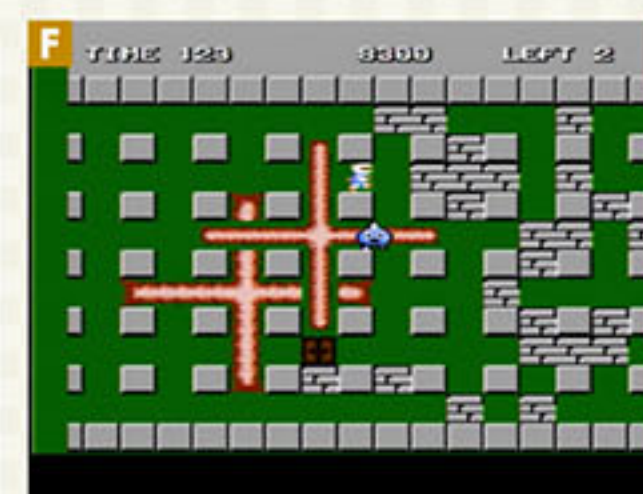
Mega Man series

©CAPCOM CO., LTD. ALL RIGHTS RESERVED.

The battle against the evil scientist Dr. Wily began with the Famicom game *Mega Man*. The series evolved over the years, with character voices and the ability to slide and charge being added.

Bomberman

Bomberman series



©Konami Digital Entertainment

Bomberman's instantly recognizable and distinctive look in games was already established in *Bomberman*, released in 1985. Game features such as powering up bombs have also been carried over from the first title.



Slime

Dragon Quest series

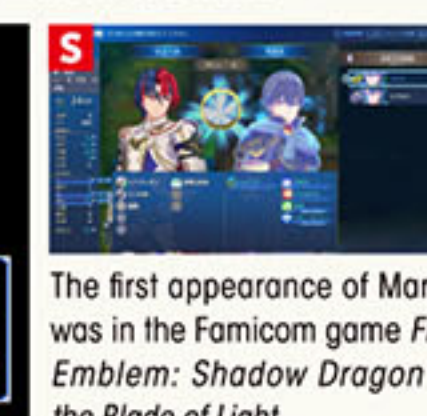


The Slime is a truly iconic monster of the series, having appeared in every installment since the *Dragon Warrior*, the first game in the series, released in 1986.

© ARMOR PROJECT/BIRD STUDIO/SQUARE ENIX All Rights Reserved.

Other familiar characters

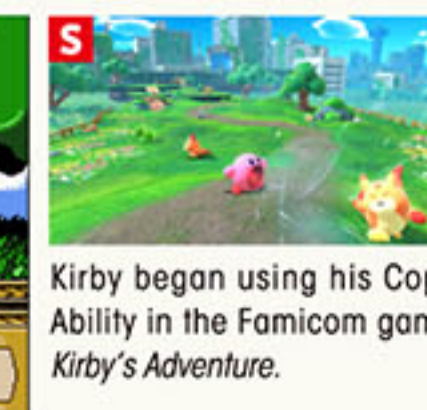
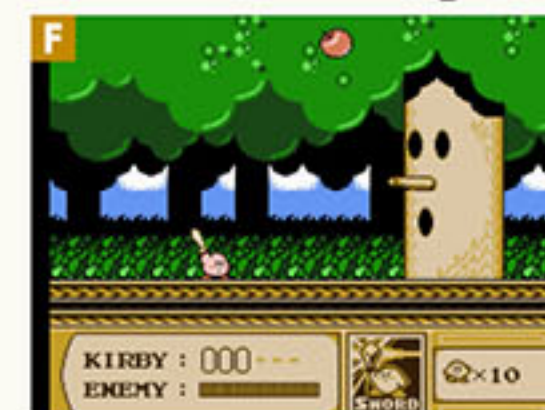
Marth Fire Emblem series



The first appearance of Marth was in the Famicom game *Fire Emblem: Shadow Dragon & the Blade of Light*.

© Nintendo / INTELLIGENT SYSTEMS

Kirby Kirby series



Kirby began using his Copy Ability in the Famicom game *Kirby's Adventure*.

© HAL Laboratory, Inc. / Nintendo

Nobunaga Nobunaga's Ambition



The Nobunaga's Ambition series is representative of the historical simulation genre, and the Famicom version was released in 1988.

©KOEI TECMO GAMES All rights reserved.

Momotaro Momotaro Dentetsu



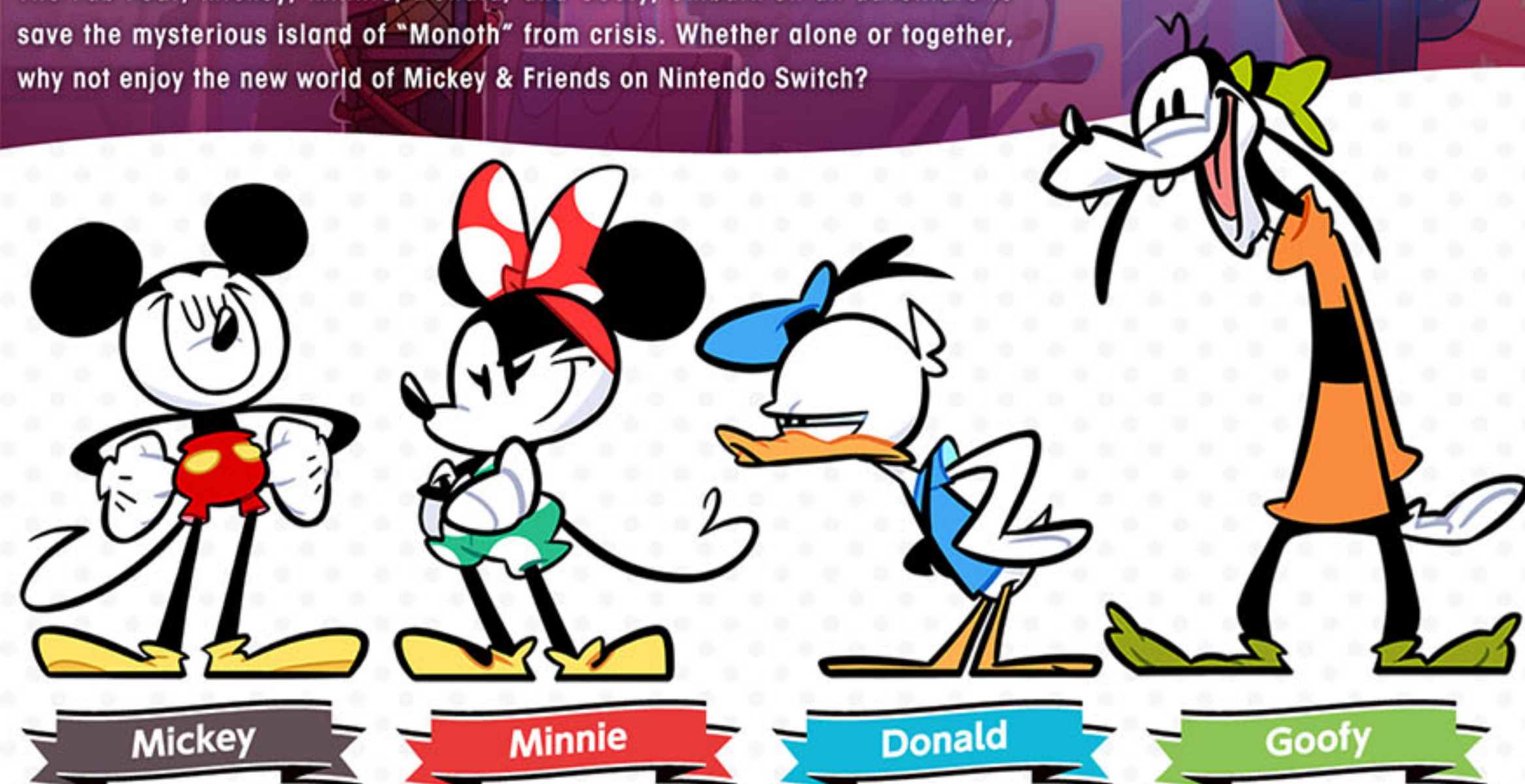
Momotaro Dentetsu, released in 1988, was the first title in this classic party game series featuring popular characters.

©Konami Digital Entertainment

Disney ILLUSION ISLAND

ミッキー&フレンズの不思議な冒険

The Fab Four, Mickey, Minnie, Donald, and Goofy, embark on an adventure to save the mysterious island of "Monoth" from crisis. Whether alone or together, why not enjoy the new world of Mickey & Friends on Nintendo Switch?



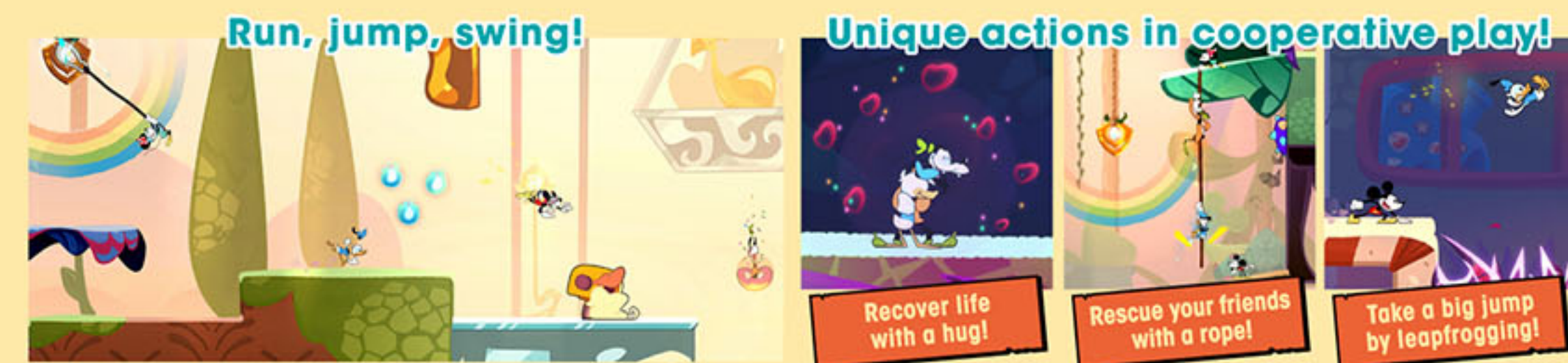
Mickey
Bright and brave, the leader of everyone. Upon learning about the crisis on the island, he decides to embark on an adventure with his friends.

Minnie
Thoughtful and reliable, she always speaks kindly to her friends even in difficult times. This time, she embarks on the adventure in pants style.

Donald
Self-centered and competitive by nature. Reluctantly, he listens to Mickey and Minnie and joins the adventure.

Goofy
Good-natured and easygoing. Although he has a laid-back personality, he shows nimble actions during the adventure.

Explore the island using various actions!



Items inspired by Mickey & Friends' film works make their appearance!

Disney Illusion Island
Available now

Physical MSRP 5,478 yen (tax included)
Digital MSRP 5,400 yen (tax included)

● Genre: Action, Platformer, Adventure
● Publisher: Disney Games

Play mode TV, Local, Online
No. of players 1-4, 1-4, 1

© 2023 Disney

CERO A

STORY INTRODUCTION

Relying on the map they received, the Fab Four gathered on an island for a picnic...?



Drive around the world in

MARIOKART 8 DELUXE
コース追加パス

Mario Kart 8 Deluxe – Booster Course Pass includes multiple courses inspired by cities around the world. Would you like to sightsee some famous landmarks?



Mario Kart 8 Deluxe

Available now

Physical MSRP 6,578 yen (including tax)
Digital MSRP 6,578 yen (including tax)

Genre: Action race game
Publisher: Nintendo

Play mode: TV, LAN, Online

No. of players: 1-4, 1-4, 1

Online communication: 2-12 players
Local communication: 2-8 players

CERO A

48 courses

Mario Kart 8 Deluxe – Booster Course Pass

Available now

Digital MSRP 2,500 yen (including tax)

All 48 additional courses have now been added!

To play Mario Kart 8 Deluxe – Booster Course Pass, the Mario Kart 8 Deluxe game is required. Access the courses at no additional cost with a paid Nintendo Switch Online + Expansion Pack membership.

48 courses

UNITED KINGDOM London Loop

A city course inspired by London, U.K. Besides the famous palace and bridge, you can also see the characteristic double-decker bus.



There are a lot of alternate routes, so choosing the best one is essential!

GERMANY Berlin Byways

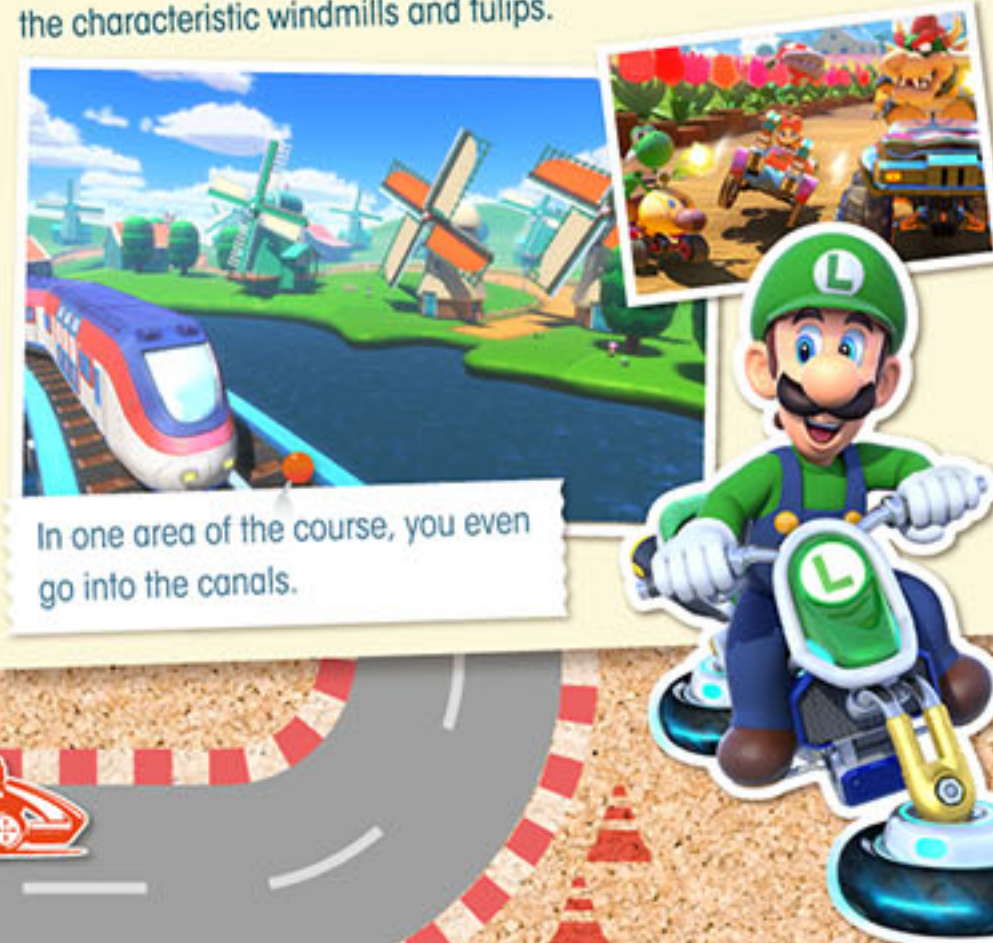
This course will let you race by the symbolic gate and tower of Berlin, Germany.



Other than tourist buses and taxis, you'll also encounter falling Whomps in one area of the final lap! Be careful not to run into them!

THE NETHERLANDS Amsterdam Drift

Set in Amsterdam, the Netherlands, this beautiful course features the characteristic windmills and tulips.



In one area of the course, you even go into the canals.

THAILAND Bangkok Rush

A course featuring the many landmarks of Bangkok, Thailand, including a floating market, many temples, and a golden reclining Buddha.



This rewarding course requires some technique, with its many twisting turns and routes that split vertically.

SINGAPORE Singapore Speedway

This is a course set in Singapore, where you dash through the city's nighttime scene, with the rooftop infinity pool and Chinatown.



There are multiple glide ramps, so your gliding techniques will become key!

AUSTRALIA Sydney Sprint

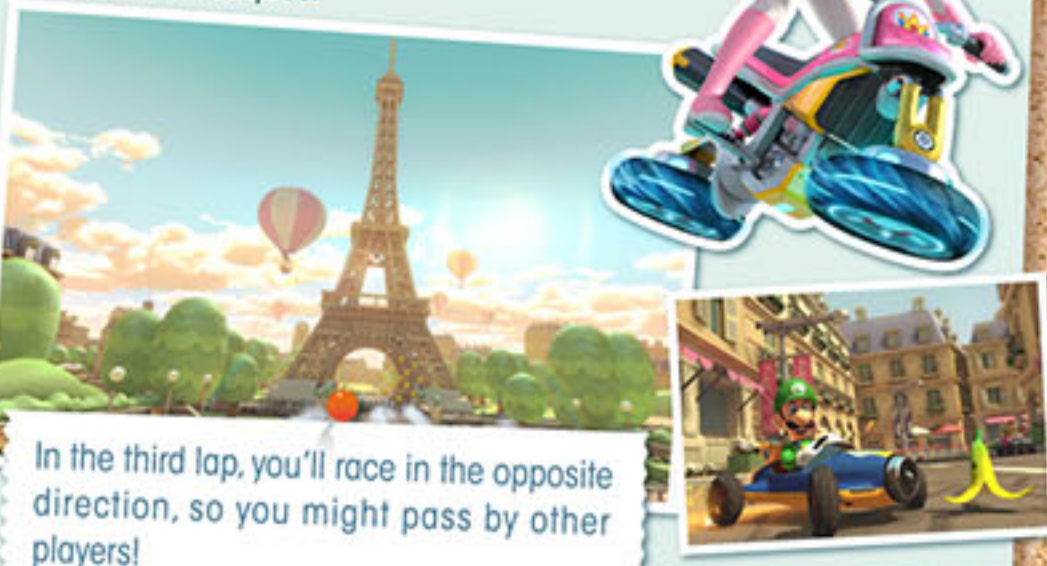
A summery course filled with sunshine, set in Sydney, Australia. Across the bay, you can see Uluru/Ayers Rock.



How successfully you can land Jump Boosts from the multiple ramps on the bridge is the key.

FRANCE Paris Promenade

An elegant course set in Paris, France, where you will race on cobblestone. It's lined with fancy cafes and boutiques.



In the third lap, you'll race in the opposite direction, so you might pass by other players!

JAPAN Tokyo Blur

Here, you might recognize the familiar landmarks of Tokyo. Mt. Fuji can be seen in the distance.



The track route changes as you make the rounds, so knowing the best path will lead to faster race times!

UNITED STATES New York Minute

Set in New York City, U.S., this nighttime course shows off the towering skyscrapers and the beautiful neon lights of Times Square.



Be sure not to bump into the tourist buses and taxis on the course!



The land of Kitakami, where Naranja Academy and Uva Academy students visit for a school trip, is truly a perfect place to spend the summer. Why don't you have a great summer in a land of lush greenery?

Enjoy Summer in the land of Kitakami



What is the land of Kitakami like?

The land of Kitakami is rich in nature with a tranquil landscape. It's home to Pokémon not found in the Paldea region, making it perfect for Pokémon trainers who want to meet even more Pokémon! There are apple orchards and a shop with toys and magazines on display, and you can have a fun and relaxing time.



*You can visit the land of Kitakami in *Part 1: The Teal Mask*.



Festival of Masks

The famed event
in the land of Kitakami

Visit the night festival wearing a traditional jinbei outfit to lighten up your summer! Why don't you enjoy the land of Kitakami's famous Festival of Masks?



Lots of stalls!

Visit the classic festival stalls and enjoy shaved ice and yakisoba! You can also find a stall selling masks featuring Pokémon. Surrounded by many stalls, Snorlax seems to be in a good mood.



Fun Fact

What is an old folktale about the Loyal Three?

The legend of the Loyal Three Pokémon is an old tale about Okidogi, Munkidori, and Fezandipiti, a trio of Pokémon known as the heroes and adored by the people of the land of Kitakami. It is said that a Pokémon that don a fearsome mask is involved in this old tale...



Pokémon Scarlet and Pokémon Violet: The Hidden Treasure of Area Zero

Available now

MSRP
Digital 3,500 yen (tax included)

The Hidden Treasure of Area Zero is a 2-part DLC.



Available now



Available now



Pokémon Scarlet and Pokémon Violet

Available now

MSRP
Physical 6,578 yen each (tax included)

MSRP
Digital 6,500 yen each (tax included)

● Genre: RPG ● Publisher: The Pokémon Company
● Distributor: Nintendo

Play mode
No. of players 1 1 1

● Online communication: 1-4 players
● Local communication: 2-4 players

● Pokémon Scarlet or Pokémon Violet is required to play The Hidden Treasure of Area Zero.
● Depending on the version of the game you have, you can either select Pokémon Scarlet: The Hidden Treasure of Area Zero or Pokémon Violet: The Hidden Treasure of Area Zero on the Nintendo eShop.

©2023 Pokémon. ©1995-2023 Nintendo/Creatures Inc./GAME FREAK Inc.
Pokémon is a trademark of Nintendo, Creatures Inc., and GAME FREAK Inc.
*Screenshots are from DLC under development.



It's really true! The Seven Mysteries of the Nintendo Switch

Mysterious rumors related to the Nintendo Switch system and games. How many of them do you know? We collected seven rumors that were circulating, which may or may not be true. They are all stories that sound far-fetched at first, but be sure to check the truth for yourself.

Top Secret

The Girl Who Disappears into the Night

No.1 This is a mysterious story that we heard about from a traveler. Apparently, one night a girl suddenly approached the traveler when they were walking through town. "There's something real important I need to tell you," the girl said. So, the traveler proceeded to visit various places to solve her problem. Just when the traveler thought they had finally solved the problem and turned around, the girl who was supposed to be there had disappeared...

Pokémon Legends: Arceus



©2022 Pokémon.
©1995-2022 Nintendo/Creatures Inc./GAME FREAK Inc.

No.2 A Cry for Help from a Locked Space

A portable toilet located in Splatsville. Do you know the mysterious rumor related to this toilet stall? Rumor has it that if you wait patiently in front of the toilet stall, you will hear a voice from inside that sounds like a call for help. Is this the work of a ghost or... The mystery only deepens.

Splatoon3



No.3 A Late-Night Message Shown on the TV Screen



Late at night on a Saturday after everyone has gone to bed. Apparently, there is a mysterious phenomenon that you will see if you gaze at the TV forever without sleeping. The time is 03:33. Something mysterious suddenly appears on the TV screen and speaks to you. What exactly is it trying to tell us...?

Animal Crossing: New Horizons



An Unknown Giant Creature Roaring in the Cold Waters

No.4

An eerie giant creature lurks in the Frost Islands at night and emerges from the water with a giant roar that will make your heart jump. There is even a rumor among sailors that this creature reacts to your gestures, but it seems few people have actually witnessed this. Can this be true...?



Monster Hunter Rise

No.5 A Mysterious Flying Sphinx!?

There seems to be sightings of something that looks like a flying Sphinx in New Donk City of Metro Kingdom. It's quite hard to believe that something of that size would be flying in the air. However, there is even some awfully specific information circulating that "you should capture the Binoculars at the Main Street Entrance and look up at the sky in the northwest direction." People who are interested should give it a try.



Super Mario Odyssey

No.6 A Luminescent Creature Behind You

This is a story said to have happened at the foot of a certain mountain in Hyrule. A person was resting under a cherry-blossom tree when they felt a special presence and turned around. There, the person saw a large creature with sharp eyes and blue-white fur. The person mentioned that just as this creature appeared, multiple rays of light rose up towards the sky, and they lost sight of the creature while admiring this sight... What in the world was that creature...



The Legend of Zelda: Tears of the Kingdom

No.7 Terrifying! A Strange Sound from the Nintendo Switch

The "press the same button three times" screen that is displayed on the Nintendo Switch. Many people press the A Button three times but apparently, if you press the Right Stick three times on this screen, you will hear a strange and other-worldly sound.



Nintendo Switch



IS IT CONNECTED TO THE POWER MOONS?

For quick game sessions
in your spare time

Game Mapping

This is a mapping of Nintendo Switch games you can jump right into for quick game sessions, sorted by number of players and how you can play. Why not play these games in your spare time during waits in daily life or during train travels?

Thinking / Puzzles



1 Pick Up!



Let's Play! Oink Games



KUUKIYOMI: Consider It! ONLINE



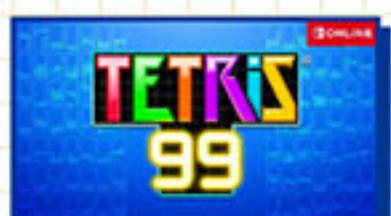
Big Brain Academy: Brain vs. Brain



Snipperclips Plus: Cut It Out, Together!



Puyo Puyo™Tetris®2



TETRIS® 99



Among Us



Mini Metro



Picross S9



Part Time UFO



Captain Toad: Treasure Tracker



SubaraCity



Q REMASTERED



Donut County



Pokémon Café ReMix

Play with others



Everybody 1-2-Switch!



Kirby's Dream Buffet



SUPER NODAGE WORLD



Clubhouse Games: 51 Worldwide Classics



We Love Katamari REROLL + Royal Reverie



Good Job!



Taiko no Tatsujin: Rhythm Festival



The Stretchers



Mr. DRILLER DrillLand



Fight Crab



DEEMO



Lonely Mountains:Downhill



Fall Guys



Gang Beasts



Toodee and Topdee



Tricky Towers



Ultimate Chicken Horse

Reflexes / Action



Play by yourself



Pick Up!

1 Collection of worldly popular board games



Let's Play! Oink Games

Play online or offline, with friends and family, try to outwit each other or cooperate. With this game, fun small box games that are world hits can be played on the Nintendo Switch!

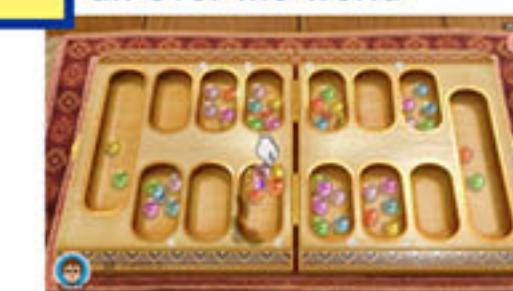
2 The definitive illustration puzzle!



Picross S9

This is the newest installment of Picross on the Nintendo Switch. With controls made for a smooth gameplay experience, you can focus on solving the puzzles with no stress.

3 Compilation of games from all over the world



Clubhouse Games: 51 Worldwide Classics

This collection includes 51 classic games played all over the world. It can accompany you in various situations like in your spare time or during your vacation.

4 Gourmet battle you can casually enjoy



Kirby's Dream Buffet

A competitive action game in which you battle as Kirby against 3 others to eat the most strawberries. Roll, eat, and plump up in this mouth-watering gourmet battle in a snack world.

5 Fantasy, performed by touching



DEEMO

This is a rhythm game inspired by a piano, in which you perform songs by touching the icons that stream down from the far side of the screen. It includes over 200 songs.



7

8

9

S	M	T	W	T	F	S
						1
2	3	4	5	6	7	8
9	10	11	12	13	14	15
16	17	18	19	20	21	22
23 30	24 31	25	26	27	28	29

S	M	T	W	T	F	S
		1	2	3	4	5
6	7	8	9	10	11	12
13	14	15	16	17	18	19
20	21	22	23	24	25	26
27	28	29	30	31		

S	M	T	W	T	F	S
						1
2	3	4	5	6	7	8
9	10	11	12	13	14	15
16	17	18	19	20	21	22
23	24	25	26	27	28	29
30						